
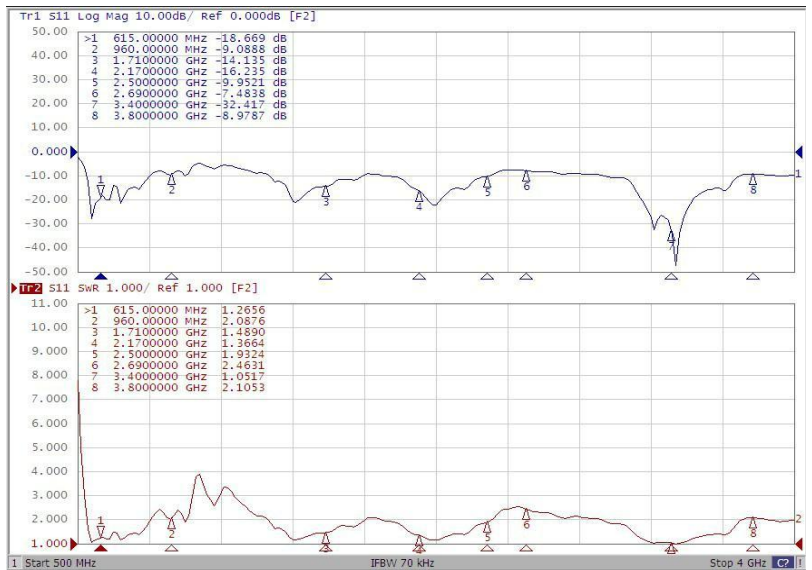
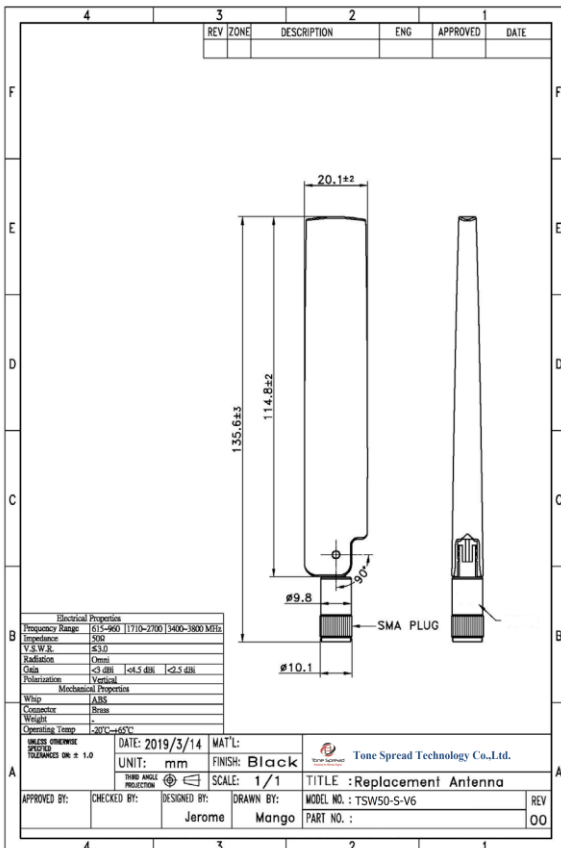


615-960/1710-2700/3400-3800MHz Multi Band Omni Antenna

Model: TSW50-S-V6

Item		Schematic Diagram
Frequency Range	615-960/1710-2700/3400-3800MHz	
V.S.W.R	< 3	
Impedance	50 OHM	
Type of Radiation	Omni-directional	
Polarization	Vertical	
Gain	<3dBi @615-960MHz <4.5dBi @1710-2700MHz <2dBi@3400-3800MHz	
Connector	SMA Male (Swivel) Brass Whip Material: ABS	
Size	135.6x20.1mm	
Operating temperaturerange	-20°C to + 65°C	

Product Drawing :



Frequency (MHz)	615	698	880	960	1710	1880	2170	2500	2700	3400	3600	3800
Efficiency (%)	49.29	45.95	46.83	48.25	58	51	66.24	58.48	63.57	62.46	66.34	59.32
Peak Gain (dBi)	1.28	1.5	2.34	2.77	2.56	2.14	3.58	4.38	4.1	1.65	1.47	2.16