

2-Element Dipole Array Antennas

TS-400DQ-2

2-Element Dipole Array Antennas

Technical Sheet



Applications

- UHF Band TETRA Communications
- Wireless Paging System
- Wireless Data transmission system
- Wireless Video System

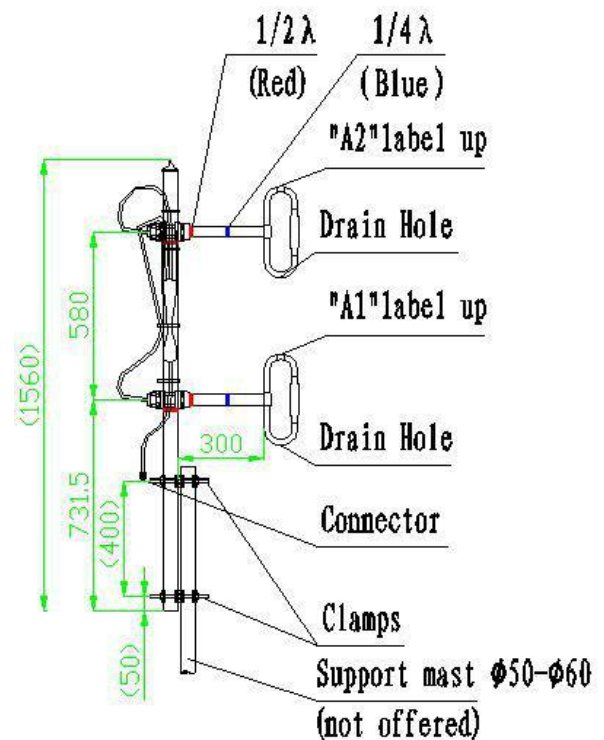
Features

- Broad Band, Low VSWR
- Medium Gain
- 2-element dipole array antennas
- 300W High Power
- Pattern Adjustable Offset circular, cardioids, or bidirectional

Specifications

| | |
|---|---|
| Model | TS-400DQ-2 |
| Freq.Range -MHz | 380~470 |
| Gain (dependent on pattern) | ~ ³ 6dBd |
| Ver.Beamwidth -° | 35 |
| VSWR | ≤1.5 |
| Impedance-Ω | 50 |
| Max.Power-W | 300 |
| Polarization | Vertical |
| Connector | N Female or 7/16DIN(OPT.)on harness feed cable |
| Dimensions(H×D)-mm | 1560×440 |
| Weight(antenna+clamps)-Kg | 7 |
| Lightning Protection | DC Grounded |
| Wind rating -m/s | 60 |
| Support mast is customer-supplied , (Mast Supplied by customer) | |

Installation Sketch



(Harness not shown) Support mast is customer-supplied